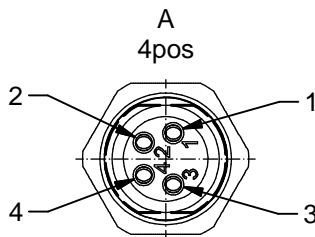


Contact assignment:

- 1) brown
- 3) blue
- 4) black



Contact assignment:

- 1) brown
- 2) white
- 3) blue
- 4) black

Technical specification:

Rated voltage: 3pos 4pos
IEC 61076-2-104 60 V 30V

Current rating: 3/4pos
IEC 61076-2-104 3A bei 40°C

Insulation resistance: >=100 MΩ
IEC 60512

Pollution degree: 3/2
IEC 60664-1

Degree of protection: IP 67, in mated condition
IEC 60529

Temperature range: -30°C ... +80°C
IEC 60664-1

Mating cycles: >=100
IEC 60512-9a

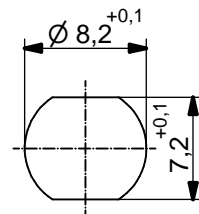
Materials:

Contact: CuZn
Contact plating: Nickel, gold plated
Contact carrier: TPU GF, UL 94
Sealing: NBR
Socket housing: CuZn, nickel plated
Grouting: Polyurethane-resin, UL 94

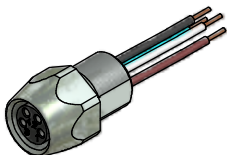
Installation specification:

recommended torque: 0,6-0,8 Nm

Conec installation tool: torque wrench: 36-000200
insert across flats 10: 36-000270



Minimum wall thickness 1,5mm, alternativ panel cut-out d=8,2



Part no:	Description:	Pos	Length L:	Wire:
42-01000	SAL - 8 - FK3 - 0,2	3	0,2m	AWG 24 PVC, UL
42-xxxxx	SAL - 8 - FK3 - ...	3	x	
42-01001	SAL - 8 - FK4 - 0,2	4	0,2m	
42-xxxxx	SAL - 8 - FK4 - ...	4	x	

DO NOT ALTER CAD DRAWING BY HAND	Directive 2002/95/EC RoHS compliant	Index: d 03.05.11 VF Ä3914 technical specification modified, sleeve side B removed, data sheet revised	dim. in mm	title: Female socket M8x1 with wire, frontmounting										
		tolerance of wire: L ≤ 0,5m: L + 20mm L > 0,5m: L + 4%	<table border="1" style="width: 100%; border-collapse: collapse;"> <tr> <td style="width: 30px;"></td> <td style="width: 30px;">date</td> <td style="width: 30px;">name</td> </tr> <tr> <td>drawn</td> <td>17.09.08</td> <td>Fromm</td> </tr> <tr> <td>appd.</td> <td>17.09.08</td> <td>Mankopf</td> </tr> </table>			date	name	drawn	17.09.08	Fromm	appd.	17.09.08	Mankopf	dwg no:
			date		name									
		drawn	17.09.08		Fromm									
appd.	17.09.08	Mankopf												
THIS DRAWING MAY NOT BE COPIED OR REPRODUCED IN ANY WAY, AND MAY NOT BE PASSED ON TO A THIRD PARTY WITHOUT WRITTEN PERMISSION. OWNERSHIP AND COPYRIGHT OF CONEC GmbH		42K1A090												
		part no:	see table											