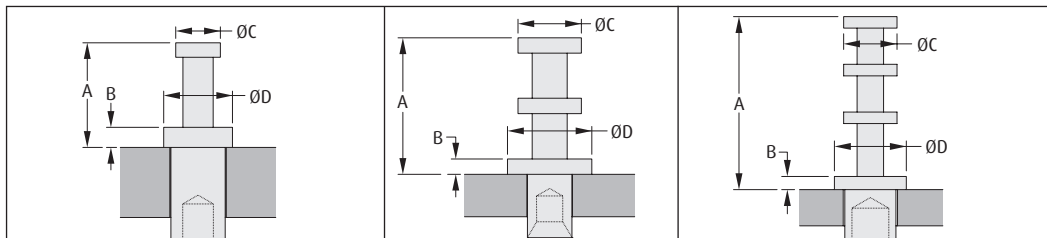
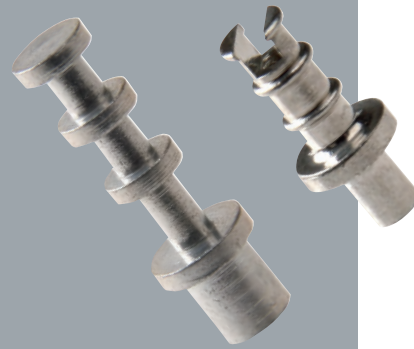


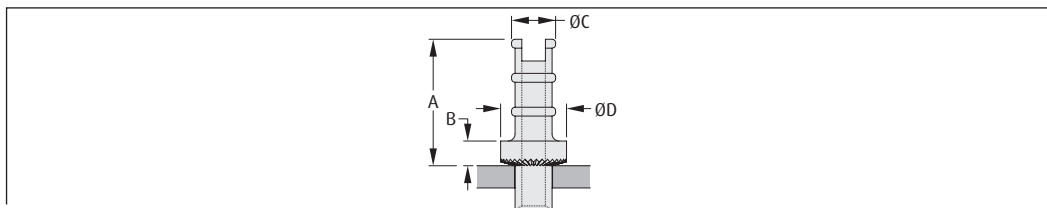
PCB Hardware

Turned Terminals

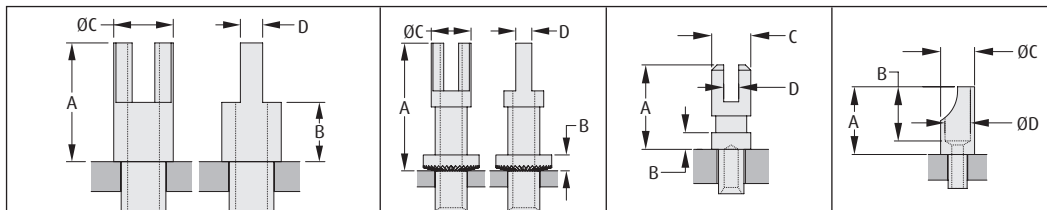
- Material: Brass with tin plating.
- Retention by swaging feature available.
- For swaging tool, change order code prefix to Z, and suffix to 00 (example Z9001-00).
- Suitable for a variety of PCB thicknesses from 1.6mm to 3.2mm.



ORDER CODE	H9001-01	H9004-01	H2121-01	H9020-01	H9021-01
A	2.39mm	4.74mm	5.15mm	7.65mm	7.65mm
B	0.46mm	1.19mm	0.58mm	0.58mm	0.58mm
C	Ø1.02mm	Ø1.91mm	Ø2.39mm	Ø2.36mm	Ø2.36mm
D	Ø1.57mm	Ø3.18mm	Ø3.18mm	Ø3.18mm	Ø3.18mm
PANEL THICKNESS	1.60mm	1.60mm	1.60mm	1.60mm	2.40mm
MOUNTING HOLE	Ø1.25 - 1.33mm	Ø2.01 - 2.09mm	Ø1.69 - 1.74mm	Ø2.35 - 2.45mm	Ø2.35 - 2.45mm



ORDER CODE	H2071Z01	H2072-01	H2072Z01	H2072ZL1	H2073Z01	H2074Z01
A	9.12mm	6.29mm	6.52mm	6.52mm	9.12mm	8.74mm
B	1.78mm	1.01mm	1.24mm	1.24mm	1.78mm	1.60mm
C	Ø3.18mm	Ø3.25mm	Ø2.54mm	Ø2.54mm	Ø3.18mm	Ø4.57mm
D	Ø4.75mm	Ø3.96mm	Ø3.96mm	Ø3.96mm	Ø4.75mm	Ø6.35mm
PANEL THICKNESS	2.40mm	1.60mm	1.60mm	2.40mm	3.20mm	3.20mm
MOUNTING HOLE	Ø2.68 - 2.78mm	Ø2.17 - 2.27mm	Ø2.01 - 2.11mm	Ø2.01 - 2.11mm	Ø2.68 - 2.78mm	Ø3.93 - 4.03mm



ORDER CODE	H2051-01	H2055-01	H2039-01	H9023-01	H9026-01
A	4.78mm	6.35mm	12.65mm	3.96mm	6.35mm
B	2.39mm	3.17mm	1.52mm	0.78mm	5.08mm
C	Ø3.18mm	Ø3.18mm	Ø3.90mm	Ø1.83mm	Ø3.18mm
D	0.73mm	1.13mm	1.54mm	0.71mm	Ø2.39mm
THROUGH HOLE	Ø1.06mm	Ø1.74mm	Ø2.22mm	n/a	Ø1.13mm
PANEL THICKNESS	1.60mm	2.40mm	3.20mm	1.60mm	2.40mm
MOUNTING HOLE	Ø1.60 - 1.68mm	Ø2.40 - 2.48mm	Ø3.19 - 3.27mm	Ø1.28 - 1.38mm	Ø1.84 - 1.92mm

All dimensions in mm.